

Camaro Loc PUR

PRODUCT SPECIFICATION

Key Features

- > Popular wood & stone designs
- > Loose lay interlocking planks & tiles
- > Installed over Polyflor Vinyl Loc Underlay
- > Low VOC emissions
- > Ideally suited to residential interiors



Product Format	Standard	Result
Gauge	ISO 24346 (EN 428)	4.0mm
Wear Layer	ISO 24340 (EN 429)	0.30mm
Total Weight	ISO 23997 (EN 430)	7025g/m ²
Finish		PUR

Plank & Tile Sizes	Size	Shades	Quantity per Box	Coverage per Box/Roll
Plank	145.6mm x 907.6mm	6	15	1.98m ²
	177.4mm x 1212.4mm	13	9	1.94m ²
Tile	298mm x 602.8mm	5	11	1.98m ²

Performance Requirements	Standard	Result
General Performance	ISO 10582 (EN 649)	Conforms
Use Area	ISO 10874 (EN 685)	23, 31
Slip Resistance	EN 13893 DIN 51130 / DIN EN 16165 Ann. B	Class DS R10
Binder Content	ISO 10582	Type I
Abrasion Resistance	EN 649	Group T
Reaction to Fire	EN 13501-1	Class Bfl-S1
Static Electrical Propensity	EN 1815	≤2.0kV Classified as 'antistatic'
Residual Indentation	ISO 24343-1 ASTM F970 ASTM F1914	<0.10mm ≤0.005" @ 750psi ≤0.005"
Castor Chair (continuous use)	ISO 4918 (EN 425)	Suitable
Dimensional Stability	ISO 23999 (EN 434) ASTM F2199	<0.10% Pass
Underfloor Heating		Suitable, max 27°C
Light Fastness	ISO 105-B02 (Method 3)	>6
Resistance to Light	ASTM F1515	ΔE ≤ 8.0 - Meets
Resistance to Heat	ASTM F1514	ΔE ≤ 8.0 - Meets

Sustainability

	Standard	Result
BRE Green Guide		A+ Generic
Generic EN 15804 EPD		Available
Recyclable		100%
Recycled Content		Up to 40%
REACH		Compliant
Indoor Air Comfort Gold		Eurofins certified product
FloorScore		Certified
Finnish M1 Classification		Certified
AgBB/ABG		Pass
Responsible Sourcing	SA 8000	Approved Factory

Acoustic Performance

	Standard	Result
Impact Sound Reduction	ISO 10140-3	19dB**

**Installed with Polyflor Vinyl LOC Underlay.

Maintenance Performance

	Standard	Result
Resistance to Chemicals	ISO 26987 (EN 423)	Good resistance
	ASTM F925	Good resistance

Regular light maintenance is more cost-effective than periodic heavy maintenance and more beneficial to the floor covering.



BS EN 14041



EN 14041

Polyflor Ltd. Head Office

PO Box 3, Radcliffe New Road, Whitefield, Manchester, M45 7NR • Tel: +44 (0) 161 767 1111 • Email: info@polyflor.com • www.polyflor.com

© At the time of writing and publication of sheet, all the information is specified correctly. The company reserves the right to change the specifications of this product at any time without prior notice to third parties.

V1

Camaro Loc PUR



RANGE SHADES

177.4 x 1212.4mm

6.9" x 47.7"



Manor Oak **3467**



Devonshire Oak **3462**



Hickory Oak **3439**



Grey Driftwood **3463**



Evergreen Oak **3442**



Smoke Limed Oak **3437**



Butternut Oak **3443**



Dockyard Timber **3465**



Laurel Dark Oak **3436**



Tan Limed Oak **3438**



Flamed Oak **3468**



Vienna Oak **3466**



Clara Oak **3461**



Camaro Loc PUR

145.6 x 907.6mm
5.7" x 35.7"



White Limed Oak **3441**  LRV 50




Grey Mountain Ash **3427**  LRV 32



Summer Maple **3429**  LRV 35



Apple Tree **3431**  LRV 36

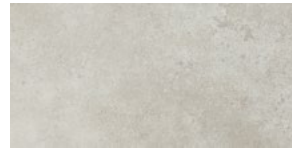



Rich Valley Oak **3432**  LRV 26




Vintage Timber **3446**  LRV 17

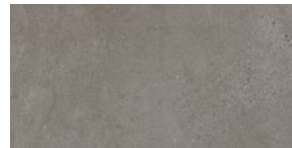
298 x 602.8mm
11.7" x 23.7"




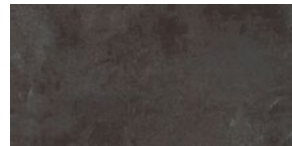
Isla Concrete **3457**  LRV 55




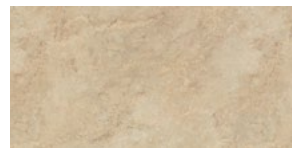
Grey Flagstone **3452**  LRV 43




Maison Concrete **3458**  LRV 20



Black Shadow Slate **3453**  LRV 12



Classic Yorkstone **3455**  LRV 46

LRV - Light Reflectance Value

 Micro Bevelled Edges

 Colour/Pattern Variation

Polyflor Ltd. Head Office

PO Box 3, Radcliffe New Road, Whitefield, Manchester, M45 7NR • Tel: +44 (0) 161 767 1111 • Email: info@polyflor.com • www.polyflor.com

© At the time of writing and publication of sheet, all the information is specified correctly. The company reserves the right to change the specifications of this product at any time without prior notice to third parties.

V1