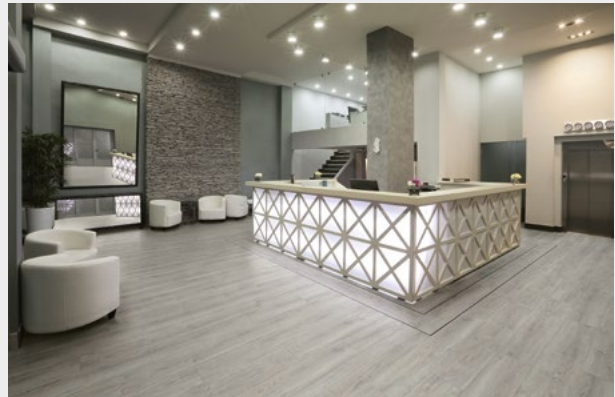


# Expona Bevel Line PUR

## PRODUCT SPECIFICATION

### Key Features

- > Wood, stone & concrete designs
- > Bevelled for a defined edging style
- > Inlay strips for fine detailing
- > Low VOC emissions
- > Heavy commercial & residential



Product Format	Standard	Result
Gauge	ISO 24346 (EN 428)	2.5mm
Wear Layer	ISO 24340 (EN 429)	0.55mm
Total Weight	ISO 23997 (EN 430)	4290g/m <sup>2</sup>
Finish		PUR

Plank & Tile Sizes	Size	Shades	Quantity per Box	Coverage per Box/Roll
Plank	76.2mm x 914.4mm	2	48	3.34m <sup>2</sup>
	101.6mm x 914.4mm	6	36	3.34m <sup>2</sup>
	152.4mm x 914.4mm	2	36	3.62m <sup>2</sup>
	184.2mm x 1219.2mm	5	15	3.37m <sup>2</sup>
	203.2mm x 1219.2mm	3	14	3.46m <sup>2</sup>
Tile	457.2mm x 457.2mm	3	16	3.34m <sup>2</sup>
	304.8mm x 914.4mm	3	12	3.34m <sup>2</sup>
	457.2mm x 914.4mm	3	8	3.34m <sup>2</sup>

Performance Requirements	Standard	Result
General Performance	ISO 10582 (EN 649) ASTM F1700	Conforms Class III Type A+B
Use Area	ISO 10874 (EN 685)	23, 33, 42
Slip Resistance	EN 13893 DIN 51130 / DIN EN 16165 Ann. B AS 4586	Class DS R10 R10
Binder Content	ISO 10582	Type I
Abrasion Resistance	EN 649	Group T
Reaction to Fire	EN 13501-1 ASTM E662 ASTM E648 CAN/ULC S102.2	Class Bfl-S1 <450 Pass Class 1 FSV < 300; SDV < 500
Static Electrical Propensity	EN 1815	≤2.0kV Classified as 'antistatic'

<b>Residual Indentation</b>	ISO 24343-1 ASTM F970 ASTM F1914	<0.05mm* ≤0.005" @ 750psi ≤0.005"
<b>Castor Chair (continuous use)</b>	ISO 4918 (EN 425)	Suitable
<b>Dimensional Stability</b>	ISO 23999 (EN 434) ASTM F2199	<0.10% max Pass
<b>Flexibility</b>	ASTM F137	1" - Pass
<b>Underfloor Heating</b>		Suitable, max 27°C
<b>Light Fastness</b>	ISO 105-B02 (Method 3)	≥6
<b>Resistance to Light</b>	ASTM F1515	ΔE ≤ 8.0 - Meets
<b>Resistance to Heat</b>	ASTM F1514	ΔE ≤ 8.0 - Meets

\*Average test value from current production.

<b>Sustainability</b>	<b>Standard</b>	<b>Result</b>
<b>BRE Green Guide</b>		A+ ENP 429
<b>Specific EN 15804 EPD</b>		Available
<b>Recyclable</b>		100%
<b>Recycled Content</b>		Up to 40%
<b>REACH</b>		Compliant
<b>Indoor Air Comfort Gold</b>		Eurofins certified product
<b>FloorScore</b>		Certified
<b>Finnish M1 Classification</b>		Certified
<b>AgBB/ABG</b>		Pass
<b>Responsible Sourcing</b>	BES 6001 SA 8000	Very good Approved factory

<b>Acoustic Performance</b>	<b>Standard</b>	<b>Result</b>
<b>Impact Sound Reduction</b>	ISO 10140-3	2dB

<b>Maintenance Performance</b>	<b>Standard</b>	<b>Result</b>
<b>Resistance to Chemicals</b>	ISO 26987 (EN 423) ASTM F925	Good resistance Good resistance

Regular light maintenance is more cost-effective than periodic heavy maintenance and more beneficial to the floor covering.



### Polyflor Ltd. Head Office

PO Box 3, Radcliffe New Road, Whitefield, Manchester, M45 7NR • Tel: +44 (0) 161 767 1111 • Email: info@polyflor.com • www.polyflor.com

© At the time of writing and publication of sheet, all the information is specified correctly. The company reserves the right to change the specifications of this product at any time without prior notice to third parties.

# Expona Bevel Line PUR



## RANGE SHADES

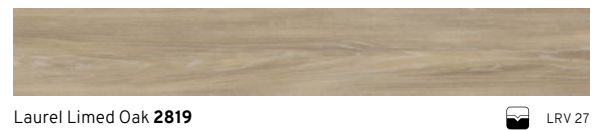
**76.2mm x 914.4mm**  
3" x 36"



**101.6mm x 914.4mm**  
4" x 36"



**184.2mm x 1219.2mm**  
7.25" x 48"



**203.2mm x 1219.2mm**  
8" x 48"



### Size Mix

Planks are supplied in 3 widths,  
36 planks per box (12 planks of each size).

**76.2/101.6/152.4mm x 914.4mm**  
3/4/6" x 36"



## Expona Bevel Line PUR

**457.2mm x 914.4mm**  
18" x 36"



Venetian Marble **2826**



LRV 54



Soho Marble **2827**



LRV 50

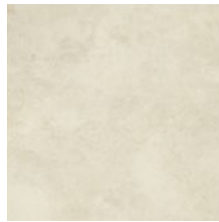


Weathered Concrete **2828**



LRV 20

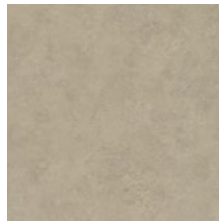
**457.2mm x 457.2mm**  
18" x 18"



Portland Stone **2981**



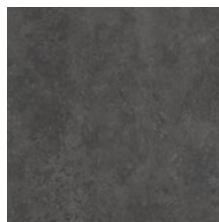
LRV 51



Wet Concrete **2987**



LRV 35



Black Limestone **2989**



LRV 14

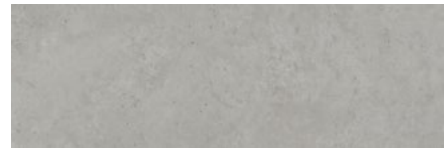
**304.8mm x 914.4mm**  
12" x 36"



Natural Tumbled Stone **2829**



LRV 43



Grey Tumbled Stone **2831**



LRV 37



Bowden Grey Slate **2832**



LRV 31

LRV - Light Reflectance Value



Bevelled Edges



Colour/Pattern Variation

**Polyflor Ltd. Head Office**

PO Box 3, Radcliffe New Road, Whitefield, Manchester, M45 7NR • Tel: +44 (0) 161 767 1111 • Email: [info@polyflor.com](mailto:info@polyflor.com) • [www.polyflor.com](http://www.polyflor.com)

© At the time of writing and publication of sheet, all the information is specified correctly. The company reserves the right to change the specifications of this product at any time without prior notice to third parties.

V1